

**PROBLEM**

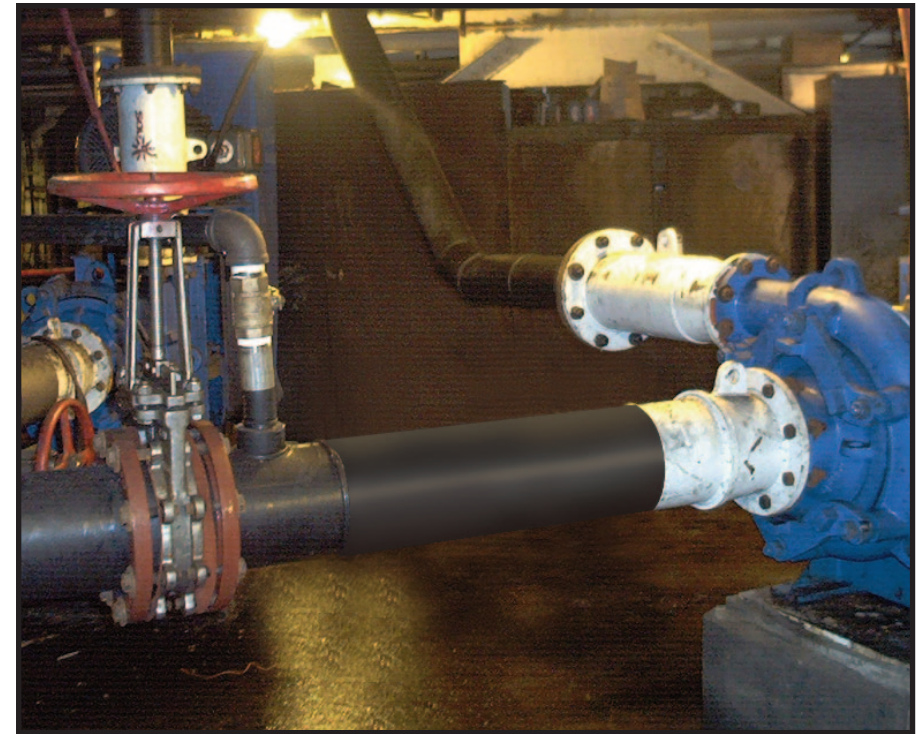
- The new pump was similar but not exact in size and required modification to the piping system. The changes included fabricated fittings with flanges, branches and reducers to provide all the connections and allow easy access to the impeller for maintenance.

**SOLUTION**

- "Butt" fused fittings to assure full system pressure capabilities
- Fabricated to exact dimensions because of the confinement of the area
- Suction line 10" from a ventrical tank

**IMPACT TO CUSTOMER**

- Economical Fittings:
  - good for "heavy media" applications
  - lighter weight requires fewer people and less equipment for rotation replacement and overall maintenance



QUALITY



QUALITY PEOPLE ■ PRODUCTS ■ SERVICE *Since 1954*

PENNSYLVANIA		SOUTH CAROLINA	VIRGINIA	WEST VIRGINIA
CORPORATE OFFICE CHARLEROI 800-353-3747	McElvenny Division DOWNTOWN 610-518-5499	WEST COLUMBIA 803-476-7348	COEBURN 888-353-3747	SHADY SPRING 888-353-3747

[www.leesupply.com](http://www.leesupply.com)



24-HOUR EMERGENCY SERVICE TEL: 724-483-7035 (after 5pm, evenings & weekends)